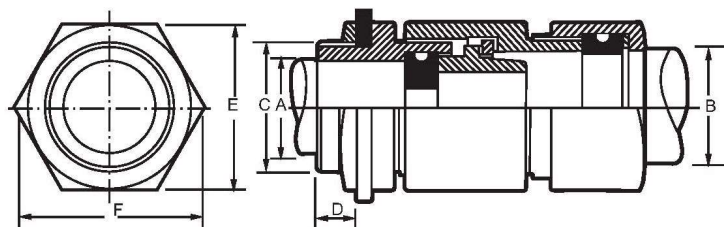


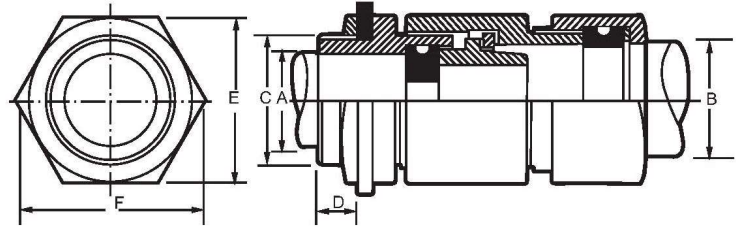
## YAMUNA DENSONS Weatherproof Type Double Compression Cable Gland Suitable For Un-Armoured Cables



### Dimensions For Double Compression Gland

Cable Dimensions		Gland Dimensions				
A (Dia) mm	B (Dia) mm	Entry Thread		E (Across Flat) mm	F (Across Corner) mm	Item Code
		C (Inches)	D (Length) mm			
13.0	13.0	3/4"	15.0	21.5	24.5	DBW01SS (UN)
14.5	14.5	3/4"	15.0	25.0	29.0	DBW01S (UN)
18.0	18.0	1"	15.0	28.0	32.0	DBW01A (UN)
20.0	20.0	1"	15.0	31.5	36.5	DBW02 (UN)
23.0	23.0	M28	15.0	32.0	37.0	DBW03SP (UN)
26.0	26.0	1.1/4"	15.0	38.0	44.0	DBW04A (UN)
30.0	30.0	1.1/2"	15.0	41.0	47.0	DBW05A (UN)
33.0	33.0	M40	15.0	47.0	54.0	DBW06SP (UN)
36.0	36.0	M42	15.0	52.0	58.0	DBW07SP (UN)
41.0	41.0	2"	15.0	56.0	64.0	DBW08 (UN)
44.0	44.0	2"	15.0	59.0	67.0	DBW09 (UN)
52.0	52.0	2"	20.0	66.5	77.0	DBW010A (UN)
60.0	60.0	M70	20.0	80.0	92.0	DBW011SP (UN)
66.0	66.0	3"	20.0	85.0	97.0	DBW012 (UN)
72.0	72.0	3.1/4"	20.0	90.0	103.0	DBW013 (UN)
80.0	80.0	3.1/2"	20.0	105.0	122.0	DBW014 (UN)
90.0	90.0	4"	20.0	117.0	135.0	DBW015 (UN)

## YAMUNA DENSONS Weatherproof Type Double Compression Cable Gland Suitable For Armoured Cables



### Dimensions For Double Compression Gland

Cable Dimensions			Gland Dimensions					
A (Under armour Dia) mm	B (Overall Dia) mm	Armour Diameter mm	Entry Thread		D (Length) mm	E (Across Flat) mm	F (Across Corner) mm	Item Code
			C					
			(ET)	(MM)				
8.0	12.0	0.8/1.4	3/4	M20	15.0	21.5	24.5	DBW01SS
11.0	16.5	0.8/1.4	3/4	M20	15.0	25.0	29.0	DBW01S
12.0	18.0	0.8/1.4	3/4	M20	15.0	28.0	32.0	DBW01
12.0	18.0	0.8/1.4	1	M25	15.0	28.0	32.0	DBW01A
14.0	20.0	0.8/1.4	1	M25	15.0	31.5	36.5	DBW02
14.0	20.0	0.8/1.4	3/4	M20	15.0	31.5	36.5	DBW02A
17.0	23.0	0.8/1.4	1	M25	15.0	32.0	37.0	DBW03
20.0	26.0	0.8/1.4	1	M25	15.0	38.0	44.0	DBW04
20.0	26.0	0.8/1.4	1.1/4	M32	15.0	38.0	44.0	DBW04A
24.0	30.0	0.8/1.4	1.1/4	M32	15.0	41.0	47.0	DBW05
24.0	30.0	0.8/1.4	1.1/2	M40	15.0	41.0	47.0	DBW05A
27.0	33.0	0.8/1.4	1.1/2	M40	15.0	47.0	54.0	DBW06
27.0	33.0	0.8/1.4	1.1/4	M32	15.0	47.0	54.0	DBW06A
30.0	37.0	0.8/1.4	1.1/2	M40	15.0	52.0	58.0	DBW07
35.0	41.0	0.8/1.4	2	M50	15.0	56.0	64.0	DBW08
40.0	46.0	0.8/1.4	2	M50	15.0	59.0	67.0	DBW09
46.0	52.0	0.8/1.4	2	M50	20.0	66.5	77.0	DBW010
46.0	52.0	0.8/1.4	2.1/2	M63	20.0	66.5	77.0	DBW010A
50.0	56.0	0.8/1.4	2.1/2	M63	20.0	74.0	85.0	DBW011S
54.0	60.0	0.8/1.4	2.1/2	M63	20.0	80.0	92.0	DBW011
60.0	66.0	0.8/1.4	3	M75	20.0	85.0	97.0	DBW012
66.0	72.0	0.8/1.4	3	M75	20.0	90.0	103.0	DBW013A
72.0	78.0	0.8/1.4	3.1/4	M82	20.0	99.0	113.0	DBW013
78.0	84.0	0.8/1.4	3.1/2	M90	20.0	105.0	122.0	DBW014
88.0	94.0	0.8/1.4	4	M100	20.0	117.0	135.0	DBW015
98.0	105.0	0.8/1.4	4.1/2	M110	20.0	130.0	149.0	DBW016